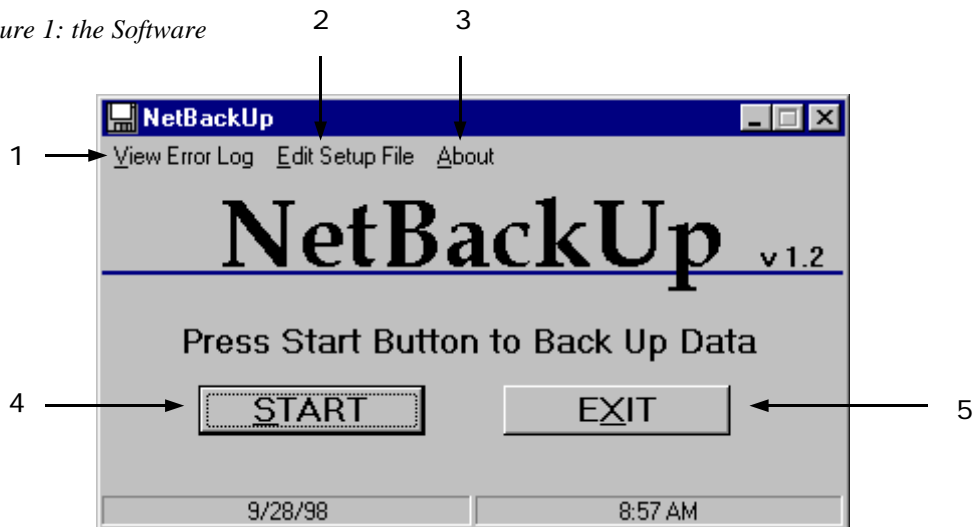


# NetBackUp

Figure 1: the Software



## Definitions

- 1 View Error Log:** A record of what was backed up, what was not backed up and why.
- 2 Edit Setup File:** Instructs the software as to which directories to backup, and where to find them.
- 3 About:** How to contact the developers, Kobelt Development Inc.
- 4 Start:** Starts the backup process.
- 5 Exit:** Closes the software.

## Requirements

- 1 A NetSoft Router must be used with AS/400's.**
- 2 Source folders residing on the PC running NetBackUp cannot be password protected:** Shared folder passwords are only allowed on the other networked machines.
- 3 Shared folder passwords must be set to Read Only.**

## Instructions

- 1 Click the NetBackUp icon:** Either from your desktop or from Start, Programs.
- 2 Edit Setup File, if necessary:** See the next page for detailed instructions.
- 3 Press START:** The software will connect to your server and begin the backup process.
- 4 Press EXIT:** You are finished.

## If There Is A Problem

- 1 View Error Log:** Check the last group of reports. See the next page for details.
- 2 Fix The Problem:**
  - Do the source folders exist on the correct PC's?
  - Are these source folders shared?
  - Are the shared folder passwords correct and set to Read Only?  
(Check the folder properties on the source PC)
  - Are there any password protected folders on the host PC? (Unprotect them)
  - Are these PC's powered on and connected to the network?
- 3 Press reStart:** If the problems have been fixed, the backup will be successful. If the problems persist, call KDI (604) 572-8058, or e-mail [support@kobelt.com](mailto:support@kobelt.com) for support.

## Edit Setup File

- 1 Click Edit Setup File.
- 2 The NBU.lst file appears in Notepad.

Figure 2: the NBU.lst file

```
[\\KDI\HOME\  
[David]  
TEST1  
TEST2  
TOM'S KIDS|TOM  
[Darren]  
My Documents
```

[\\KDI\HOME\ ] = the target directory for the backup.

[David] = The name of a source PC on the network.

TEST1 = The name of a shared directory to be backed up from David's PC.

TEST2 = The name of another shared directory to be backed up from David's PC.

TOM'S KIDS | TOM = The name of a password protected, shared directory to be backed up from David's PC. The password follows the pipe. In the example, the password is "TOM".

*Note: Source folders residing on the PC running NetBackUp cannot be password protected.*

[Darren] = The name of another source PC on the network.

My Documents = The name of a shared directory to be backed up from Darren's PC.

- 3 Edit the NBU.lst file as desired.
- 4 Save and close the NBU.lst file.

## View Error Log

- 1 Click View Error Log.
- 2 The Error Log file appears in Notepad.

Figure 3: the Error Log File

```
*** Wednesday June 24 1998 14:13:14 - Start of MANUAL BACKUP ***  
Wednesday June 24 1998 14:13:37 - Successful copy of \\David\TEST1\  
Wednesday June 24 1998 14:13:39 - Successful copy of \\David\TEST2\  
Wednesday June 24 1998 14:13:39 - Could not map \\David\TOM'S KIDS\ to Y:  
Wednesday June 24 1998 14:13:39 - (Probable causes: wrong password)  
Wednesday June 24 1998 14:13:39 - ERROR OCCURRED during backup of  
\\David\TOM'S KIDS\  
Wednesday June 24 1998 14:13:39 - Could not find \\Darren\My Documents\  
Wednesday June 24 1998 14:13:39 - (Probable causes: wrong password, machine  
turned off, or directory doesn't exist)  
Wednesday June 24 1998 14:13:39 - ERROR OCCURRED during backup of \\Darren\My  
Documents\  
*** Wednesday June 24 1998 14:13:40 - Unsuccessful Complete Backup ***
```

- 3 Look for the folders that the software could not map or find, and work with the suggestions given by the log records.
- 4 Do not write in this file, when you are finished, close this file without saving it.