



# CVTRPG2DDS

---

**CREATING DDS SOURCE FROM  
RPG F AND I SPECIFICATIONS**

## **USERS' GUIDE**



Kobelt Development Inc  
Unit #213 – 12837 – 76<sup>th</sup> Avenue  
Surrey, BC, Canada, V3W 2V3

Telephone: (604) 572-8058

Toll Free: (800) 661-1755

Fax: (604) 572-5165

E-mail: [info@kdi.ca](mailto:info@kdi.ca)

Web: [www.kdi.ca](http://www.kdi.ca)

**© Copyright 2001 Kobelt Development Inc.,**

Use, duplication or disclosure of this documentation is subject to approval by Kobelt Development Inc.



# Table Of Contents

<b>1 Introduction .....</b>	<b>1-1</b>
<b>2 Instructions .....</b>	<b>2-2</b>
<b>Step 1 – Loading the KDIDDSTOOL from a CD .....</b>	<b>2-2</b>
Instructions.....	2-2
Discussion .....	2-3
<b>Step 2 – Converting The RPG to DDS .....</b>	<b>2-4</b>
Instructions.....	2-4
Discussion.....	2-5
Example    The following is an example of an actual conversion. ....	2-8
<b>3 Index .....</b>	<b>3-1</b>

# List Of Figures

<b>Figure 1: Volume Attributes Display.....</b>	<b>2-3</b>
<b>Figure 2: File Attributes Display .....</b>	<b>2-3</b>
<b>Figure 3: AS/400 Main Menu, showing the addible kdiddstool command.....</b>	<b>2-5</b>
<b>Figure 4: AS/400 Main Menu, showing the kdiddstool has been added .....</b>	<b>2-6</b>
<b>Figure 5: AS/400 Main Menu, showing the cvtrpg2dds command .....</b>	<b>2-6</b>
<b>Figure 6: Create DDS Source from RPG file (CVTRPG2DDS) display.....</b>	<b>2-7</b>

# List of Tables

<b>Table 1: Create DDS Source from RPG FI's, Fields.....</b>	<b>2-7</b>
--	------------

# 1 Introduction

*CVTRPG2DDS* allows you to convert your program described files to externally described DDS files. This utility converts IBM System 36 RPGII F & I specifications to native AS/400 DDS file specifications.

When a field is defined in an I specification and in an E specification, the E specification takes precedence in the conversion.

This tool allows you to keep running your System 36 application virtually unchanged and also allows you to use the latest query and e-business access tools on your AS/400.

**Note:** For easier project overview, you may prefer to copy your F & I specifications to a new member in a new library. This isolates the members from the original application.

# 2 Instructions

## Step 1 – Loading the KDIDDSTOOL from a CD

This Demo has been created for OS/400 V3R2M0 and above. The volume label is 'KDI'. It is a good idea to create a user profile to accept ownership of the objects that will be restored from the CD.

### Instructions

**1. Key in CRTUSRPRF USRPRF (KDI) PASSWORD(KDI) PWDEXP(\*YES) LMTCPB(\*YES) TEXT ('KDI Object Owner') on the command line and then press Enter.**

**2. To load the libraries from the CD either:**

- Type **LODRUN DEV(\*OPT)** press **Enter** or
- Type **LODRUN** and press **F4** and fill in the fields as shown in Figure 1.

**Note:** While the libraries are loading you will see a splash screen with the logo 'KDI' in blue and there will be a message line which changes to show library is currently being loaded. This is shown in Figure 2.

**3. The Library that is loaded from the CD is: KDIDDSTOOL**

## Discussion

### Start Here

On the command line key in **CRTUSRPRF USRPRF (KDI) PASSWORD(KDI) PWDEXP(\*YES) LMTCPB(\*YES) TEXT ('KDI Object Owner')** and then press **Enter**.

**Figure 1: Volume Attributes Display**

This display allows you to view the condition of the CD.

```

Display Optical (DSPOPT)

Type choices, press Enter.

Volume identifier . . . . . > KDI
Optical device . . . . . *ALL           Name, *ALL
Data type . . . . . *VOLATR           *VOLATR, *SAURST,
*FILATR...
Output . . . . . *                   *, *PRINT, *OUTFILE,
*USRSPC

```

### Loading the Libraries

Listed below are two choices for loading the libraries from the CD. You only need to choose 1.

- Type **LODRUN DEV(\*OPT)** and then press **Enter** or
- Type **LODRUN** and the press **F4**. The Volume Attributes display appears, shown above in Figure 1.

**Figure 2: File Attributes Display**

This display allows you to view the content of the CD

```

Display Optical (DSPOPT)

Type choices, press Enter.

Volume identifier . . . . . WOL           > KDI
Optical device . . . . . DEV           *ALL
Data type . . . . . DATA           > *FILATR
Output . . . . . OUTPUT           *
Path . . . . . PATH           /

```

## Step 2 – Converting The RPG to DDS

The objective of this guide is to show how to convert RPG to DDS with step-by-step instructions.

### Instructions

**1. Enter the command `addlible kdiddstool`**

*See Figure 3 on page 4.*

**2. The action will be confirmed as shown:**

*"Library KDIDDSTOOL added to library list"*

**3. Enter the command `cvtrpg2dds` with F4=Prompt key.**

*See Figure 5 on page 5.*

**4. Fill in the fields.**

The descriptions on these fields are described in Table 1 on page 6.

**5. Implementation.**

After the DDS specifications are created, compile the specifications to create new files, using `SIZE(*NOMAX)`.

- Copy the S/36 file to the new file, using `CPYF` command and `FMTOPT(*NOCHK)`
- Rebuild indexes for the new file.
- Check all procedures for `REORGANIZE` and `DELETE` commands affecting the original S/36 file. You will need to replace these commands with `RGZPFM` and `CLRPFM` in the original application.
- Move the S/36 file to an archive library.
- Move the new files to the live library.

## Discussion

### Start Here

Figure 3 shows the AS/400 Main Menu. On the command line **addible kdiddstool** has been keyed in. Press **Enter** to continue.

**Figure 3: AS/400 Main Menu, showing the addible kdiddstool command**

**addible kdiddstool**  
keyed in on the  
command line.

```

RR1H                               AS/400 Main Menu                               System:  KOBELT
Select one of the following:

  1. User tasks
  2. Office tasks
  3. General system tasks
  4. Files, libraries, and folders
  5. Programming
  6. Communications
  7. Define or change the system
  8. Problem handling
  9. Display a menu
 10. Information Assistant options
 11. Client Access/400 tasks

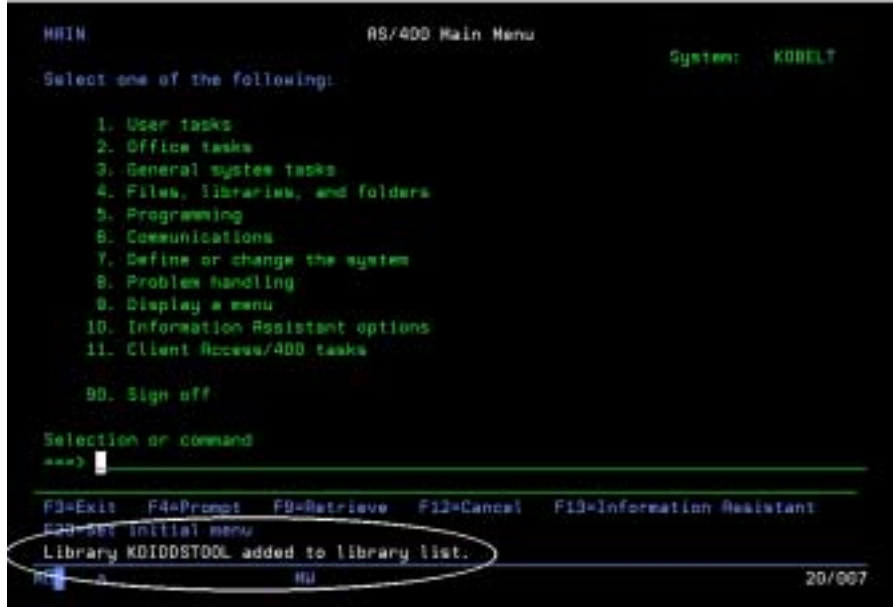
 90. Sign off

Selection or command
--> addible kdiddstool
F2=Exit  F4=Prompt  F8=Retrieve  F12=Cancel  F13=Information Assistant
F23=Set initial menu
(C) COPYRIGHT IBM CORP. 1980, 1999.
HI  a                               HU                               20/028

```

**Message Displayed** The message *Library KDIDDSTOOL added to library list* is displayed.

**Figure 4: AS/400 Main Menu, showing the kdiddstool has been added**



The message *Library KDIDDSTOOL added to library list* is displayed

**Command Line**

Figure 5 shows the AS/400 Main Menu. On the command line `cvtrpg2dds` has been keyed in. You will use the **F4** prompt key to continue onto the next display.

**Figure 5: AS/400 Main Menu, showing the cvtrpg2dds command**



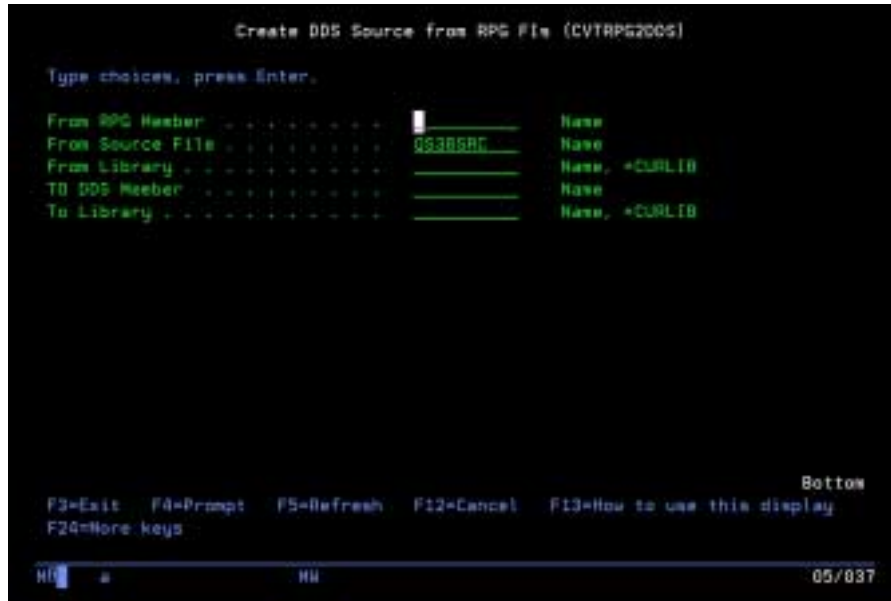
Use the **F4** prompt key

**Creating DDS Source**

Figure 6 shows the Create DDS Source from RPG file (CVTRPG2DDS) display. The fields for this display are described in Table 1 shown on page 4.

**Figure 6: Create DDS Source from RPG file (CVTRPG2DDS) display**

This display allows you to create the DDS source



**Table 1: Create DDS Source from RPG FI's, Fields**

Fields	Description
<b>From RPG Member</b>	Specify the member containing the file specifications and input specifications.
<b>From Source File</b>	Specify the file containing the member.
<b>From Library</b>	Specify the library containing source file and RPG member.
<b>To DDS Member</b>	Specify the name of the DDS member you wish to create. The new member will be contained in a file QDDSSRC, in the To Library. <b>Note: If you do not have a QDDSSRC source file the tool will create one for you.</b>
<b>To Library</b>	Specify the library containing source file and RPG member.

**Example**

The following is an example of an actual conversion.

F & I  
Specifi  
cations

```

0001 F*-----
0002 F*  FGL: FINISHED GOODS LEDGER FILE
0003 F*
0004 F*          LEVEL 4: MANUFACTURED/RESALE/DIRECT/CALGARY
0005 F*          LEVEL 3: COMODITIES OR
0006 F*                ROPING WIRE OR
0007 F*                BRITE/GALV,HIGH/LOW CARBONS
0008 F*          LEVEL 2: SUB COMMODITIES OR
0009 F*                FINE/COARSE,BRITE/GALV,SPOOLS/COILS OR
0010 F*          LEVEL 1: CUSTOMER NAME (ROPING WIRE ONLY)
0011 F*-----
0012 F*          F/G LEDGER FILE
0013 FPROFGL  IP  F 900 900R15II      3 DISK
0014 F*-----
0015 E          OBQ      12 10 0          INVENTORY OPENING BAL QTY ARRAY
0016 E          OB$      12 10 2          INVENTORY OPENING BALANCE $ ARRAY
0017 E          PDQ      12 10 0          PRODUCTION QTY
0018 E          PD$      12 10 2          PRODUCTION DOLLAR
0019 E          CSQ      12 10 0          COST OF SALES QTY
0020 E          CS$      12 10 2          C/S $
0021 E          SAL      12 10 2          SALES
0022 E          EQUALS   19  1
0023 E          L4      1  5 15          L4 DESCRIPTIONS
0024 I*----- F/G LEDGER FILE -----
0025 IPROFGL  NS  01  1 CF  2 CG
0026 I          1  2 FID          ID
0027 I          3 17 FITEM          ITEM#
0028 I          3  6 FITEM4
0029 I          18 36 FSUB          COMM.DESC
0030 I          37 40 SCDKEY          COMM.DESC
0031 I          41 66 FIDES          ITM DESC
0032 I          P 67 703FSUM          SELL U/M CONV.
0033 I          P 71 775FWGT          WT.CONV.
0034 I          78 162 FLDES          LEVEL BRK DESC
0035 I          78  92 L4DES L4          LEVEL4 DESC
0036 I          93 112 L3DES L3          LEVEL2 DESC
0037 I          113 132 L2DES L2          LEVEL3 DESC
0038 I          133 162 L1DES L1          LEVEL1 DESC
0039 I          P 163 234 OBQ          OPEN BAL.QTY
0040 I          P 235 306 OB$          OPEN BAL.$
0041 I          P 307 378 PDQ          PROD.QTY
0042 I*          P 361 3660PDQ10          PROD QTY: JULY
0043 I          P 379 450 PD$          PROD.$
0044 I*          P 451 522 CSQ          COST OF SALES QTY
0045 I*          P 523 594 CS$          C/S $
0046 I*          P 595 666 SAL          SALES $
0155 I          811 812 FCLS          CLASS
0156 I          XX  89
.
    
```

CVTRPG2DDS: Users' Guide

```

0001 A* -----
0002 A*  FGL: FINISHED GOODS LEDGER FILE
0003 A*
0004 A*          LEVEL 4: MANUFACTURED/RESALE/DIRECT/CALGARY
0005 A*          LEVEL 3: COMODITIES OR
0006 A*          ROPING WIRE OR
0007 A*          BRITE/GALV,HIGH/LOW CARBONS
0008 A*          LEVEL 2: SUB COMMODITIES OR
0009 A*          FINE/COARSE,BRITE/GALV,SPOOLS/COILS OR
0010 A*          LEVEL 1: CUSTOMER NAME (ROPING WIRE ONLY)
0011 A* -----
0012 A*  F/G LEDGER FILE
      A    R PROFGL
0014 A* -----
0024 A* ----- F/G LEDGER FILE -----
      A    FID          002          TEXT('ID ')
      A                                COLHDG('ID ')
      A    FITEM        015          TEXT('ITEM# ')
      A                                COLHDG('ITEM# ')
0028 A*          3    6 FITEM4          DPLICAT
      A    FSUB          019          TEXT('COMM.DESC ')
      A                                COLHDG('COMM.DESC ')
      A    SCDKEY        004          TEXT('COMM.DESC ')
      A                                COLHDG('COMM.DESC ')
      A    FIDES         026          TEXT('ITM DESC ')
      A                                COLHDG('ITM DESC ')
      A    FSUM          007P 3       TEXT('SELL U/M CONV. ')
      A                                COLHDG('SELL U/M CONV. ')
      A                                EDTCDE(3)
      A    FWGT          013P 5       TEXT('WT.CONV. ')
      A                                COLHDG('WT.CONV. ')
      A                                EDTCDE(3)
      A    FLDES         085          TEXT('LEVEL BRK DESC ')
      A                                COLHDG('LEVEL BRK DESC ')
0035 A*          78  92 L4DES L4          DPLICAT
0036 A*          93 112 L3DES L3          DPLICAT
0037 A*          113 132 L2DES L2          DPLICAT
0038 A*          133 162 L1DES L1          DPLICAT
      A    OBQ01         010P 0       TEXT('OPEN BAL.QTY ')
      A                                COLHDG('OPEN BAL.QTY ')
      A                                EDTCDE(3)
      A    OBQ02         010P 0       TEXT('OPEN BAL.QTY ')
      A                                COLHDG('OPEN BAL.QTY ')
      A                                EDTCDE(3)
      A    OBQ03         010P 0       TEXT('OPEN BAL.QTY ')
      A                                COLHDG('OPEN BAL.QTY ')
      A                                EDTCDE(3)
      A    OBQ04         010P 0       TEXT('OPEN BAL.QTY ')
      A                                COLHDG('OPEN BAL.QTY ')
      A                                EDTCDE(3)
      A    OBQ05         010P 0       TEXT('OPEN BAL.QTY ')
      A                                COLHDG('OPEN BAL.QTY ')
      A                                EDTCDE(3)
      A    OBQ06         010P 0       TEXT('OPEN BAL.QTY ')
      A                                COLHDG('OPEN BAL.QTY ')
      A                                EDTCDE(3)

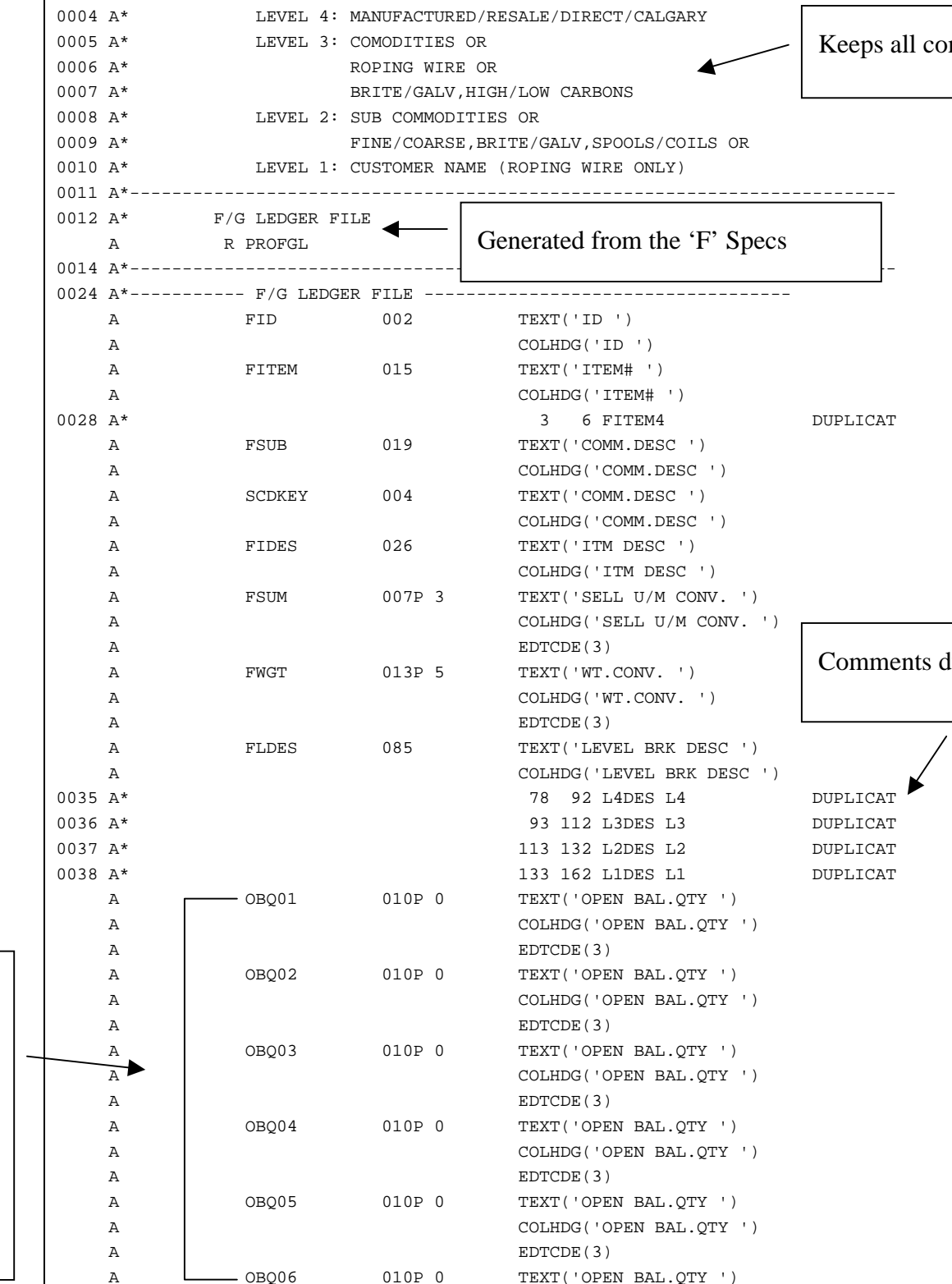
```

Keeps all comments

Generated from the 'F' Specs

Comments duplicate fields

Array from 'E' Spec



CVTRPG2DDS: Users' Guide

A	OBQ07	010P 0	TEXT('OPEN BAL.QTY ')	
A			COLHDG('OPEN BAL.QTY ')	
A			EDTCDE(3)	
A	OBQ08	010P 0	TEXT('OPEN BAL.QTY ')	
A			COLHDG('OPEN BAL.QTY ')	
A			EDTCDE(3)	
A	OBQ09	010P 0	TEXT('OPEN BAL.QTY ')	
A			COLHDG('OPEN BAL.QTY ')	
A			EDTCDE(3)	
A	OBQ10	010P 0	TEXT('OPEN BAL.QTY ')	
A			COLHDG('OPEN BAL.QTY ')	
A			EDTCDE(3)	
.				
.				
.				
A	PD\$10	010P 2	TEXT('PROD.\$ ')	
A			COLHDG('PROD.\$ ')	
A			EDTCDE(3)	
A	PD\$11	010P 2	TEXT('PROD.\$ ')	
A			COLHDG('PROD.\$ ')	
A			EDTCDE(3)	
A	PD\$12	010P 2	TEXT('PROD.\$ ')	
A			COLHDG('PROD.\$ ')	
A			EDTCDE(3)	
0044 A*			P 451 522 CSQ	COST O
0045 A*			P 523 594 CS\$	C/S \$
0046 A*			P 595 666 SAL	SALES
A	UNDEFX01	360	TEXT('UNUSED *')	' )
A	FCLS	002	TEXT(' CLASS ')	
A			COLHDG(' CLASS ')	
.				

Keeps comments in 'I' Spec

Creates a place holder field for undefined space





# 3 Index

AS/400 Main Menu, 4, 5  
Creating DDS Source, 5  
DDS Member, 6  
Field Definition, 1  
File Attributes, 2  
From Library, 6  
From RPG Member, 6

From Source Files, 6  
Loading Library Options, 1  
Project Overview, 1  
To Library, 6  
Volume Attributes, 2  
Volume Label, 1